

# CENTURY II

## Multivessel disease

### Feature

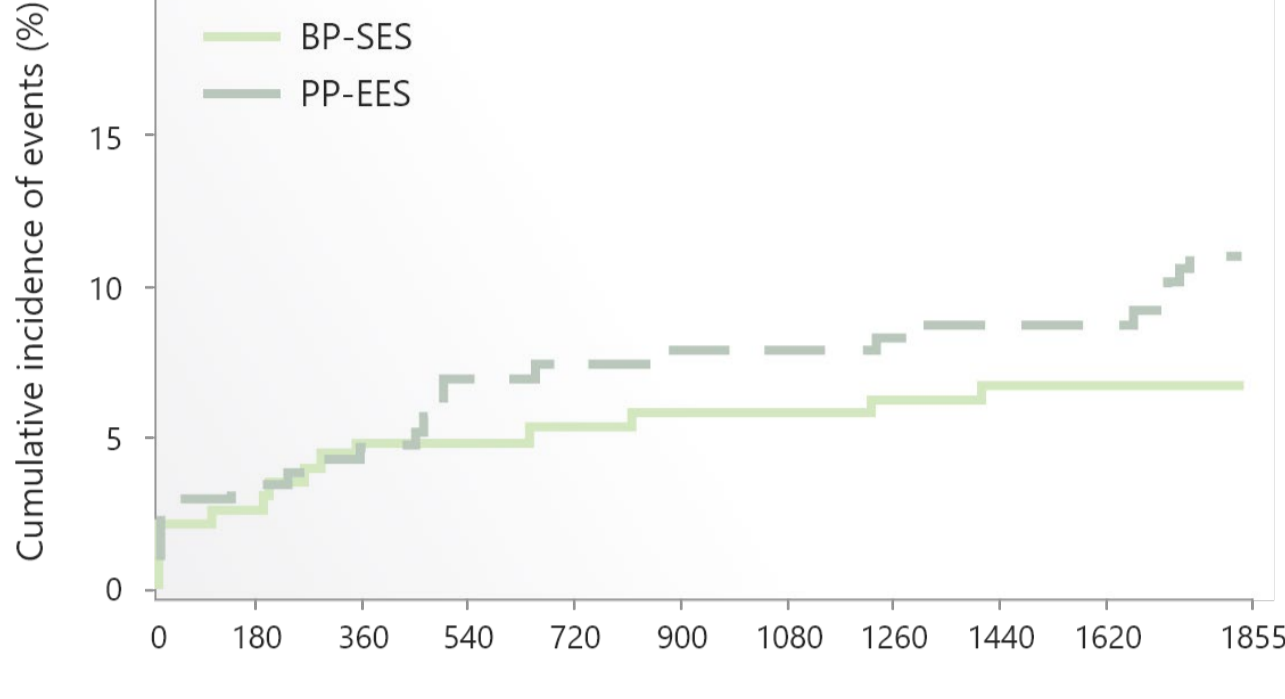
- This study reveals, that throughout the 5-year follow-up period, sirolimus-eluting bioresorbable polymer Ultimaster stent (BP-SES), displays similarly good long-term safety and efficacy profile as the everolimus-eluting permanent polymer Xience stent (PP-EES), in the treatment of MVD patients

### Multivessel disease

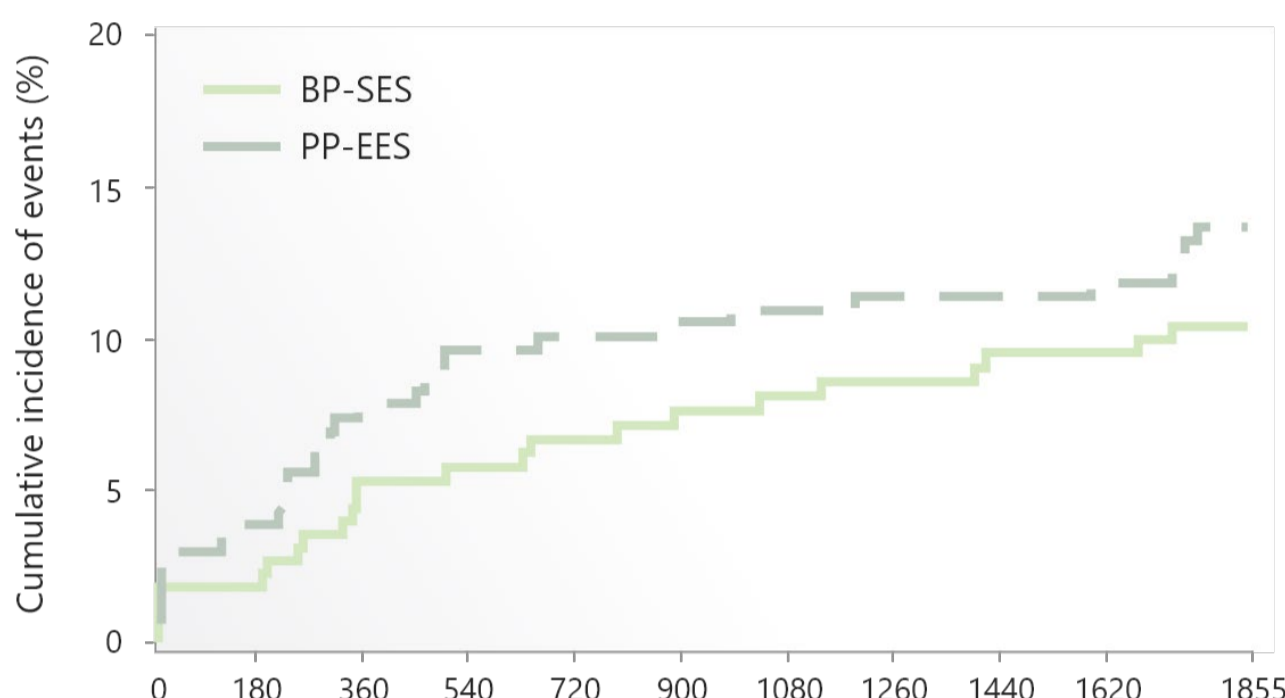


### 5-year clinical outcomes

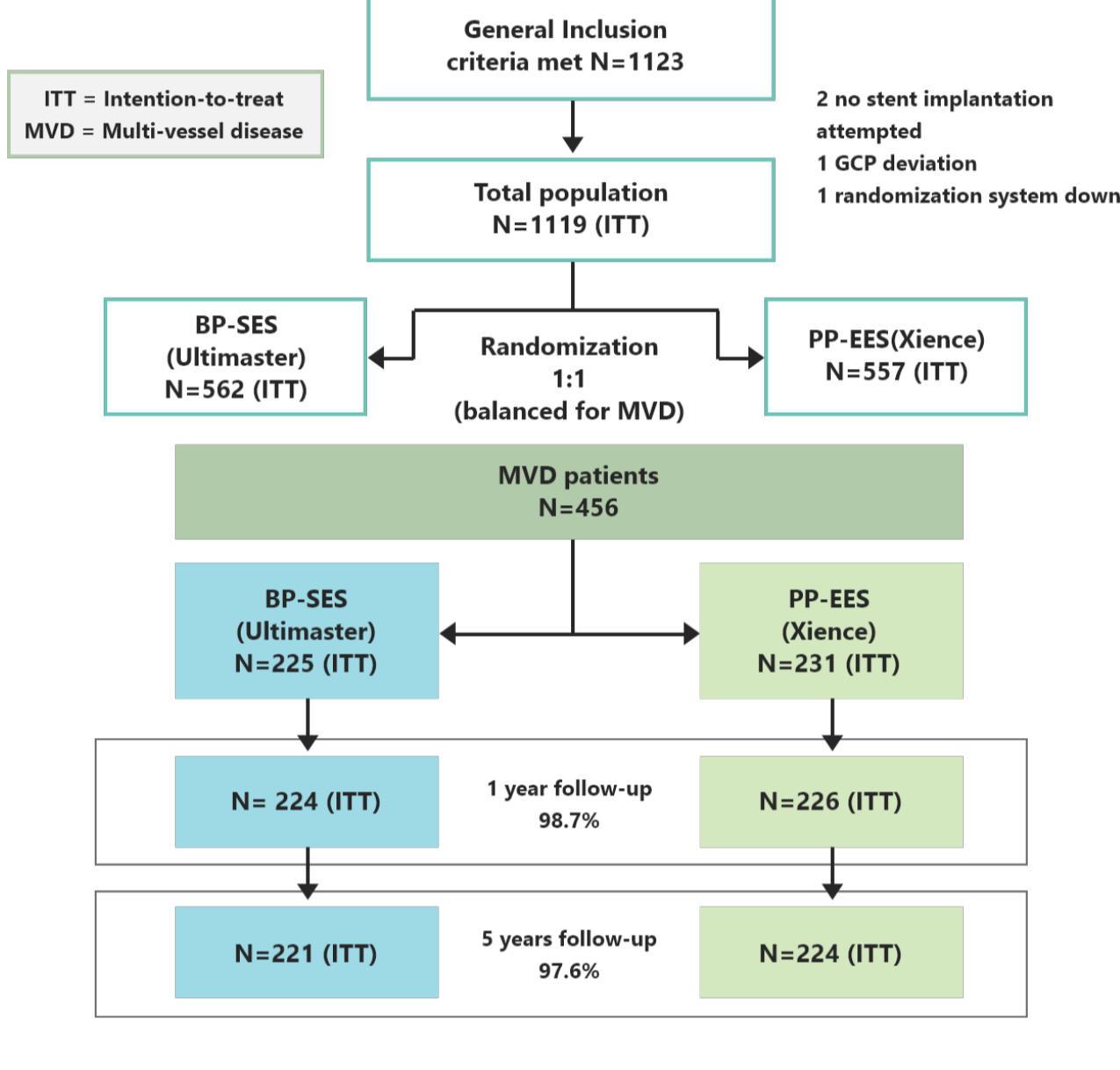
CENTURY-II - Kaplan-Meier survival curves Cumulative Events Cardiac Death or MI



CENTURY-II - Kaplan-Meier survival curves - Cumulative Events Target Lesion Failure Composite (TLF)



### Study design



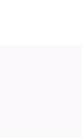
### Patient background

	BP-SES n=225	PP-EES n=231	p Value
Age, years	65.8 ± 10.4	66.9 ± 11.3	.31
Male gender	77.8	84.0	.09
Body mass index, kg/m <sup>2</sup>	27.3 ± 4.2	26.8 ± 4.2	.27
Stent Ischemia	16.4	16.5	.99
Stable angina	48.9	42.9	.20
Unstable angina	12	9.1	.31
STEMI	4.9	7.4	.27
NSTEMI	17.8	24.2	.09
Diabetes mellitus, IDDM NIDDM	37.3 21.4 78.6	33.3 18.2 81.8	.37 .61 .61
Dyslipidemia	71.0	71.1	.99
Hypertension	74.1	71.2	.49
Smoker, current	19.6	24.3	.23
Smoker, previous	48.9	37.6	.02
Renal insufficiency,	4.0	3.0	.57
Family history of CAD	31.9	32.9	.83
History of PCI	44.4	40.3	.37
History of CABG	7.1	6.5	.79
History of MI	31.1	32.5	.76
Charlson comorbidity index	1.5 ± 1.8	1.3 ± 1.6	.39
Vessels diseased (LM included)	2.3 ± 0.5	2.3 ± 0.5	.16
Number of vessels diseased (LM included)			.15
2	75.1	69.3	
3	23.6	28.6	
4	1.3	2.2	
Vessels treated	1.4 ± 0.5	1.4 ± 0.6	.87
Number of vessels treated			.76
1	59.6	59.3	
2	39.1	38.1	
3	1.3	2.6	
SYNTAX score	12.7 ± 8.7	12.3 ± 7.6	.91

	BP-SES n=225	PP-EES n=231	p Value
Lesions detected	3.1 ± 1.5	3.1 ± 1.3	.57
Lesions treated	1.6 ± 0.8	1.6 ± 0.8	.93
Lesion location			.80
RCA	30.5	32.4	
LAD	37.9	34.2	
CFX	28.3	30.8	
LM	2.5	2.4	
Graft	0.8	0.3	
Ostial	7.5	9.9	.24
Calcification			.32
None/mild	76.2	81.8	
Moderate	16.1	11.6	
Severe	7.8	6.6	
Thrombus present	3.7	3.9	.93
Bifurcation	14.8	10.7	.09
CTO	2.2	0.3	.02
ACC/AHA classification			.14
A	3.5	2.8	
B1	12.1	16.9	
B2	48.9	49.7	
C	35.6	30.7	
Access site			.77
Radial	69.8	68.4	
Femoral	28.9	30.3	
Brachial	1.3	1.3	
Pre-dilatation	76.1	76.2	.97
Post dilatation	51	49.5	.68
Stents Implanted per patient	1.9 ± 1.0	2.0 ± 1.1	.30
Total Implanted stent length per patient, mm	36.5 ± 20.1	37.5 ± 22.4	.93
Delivery success per stent	98.3	99.4	.15
Procedure success	97.3	97.8	.73

### Reference

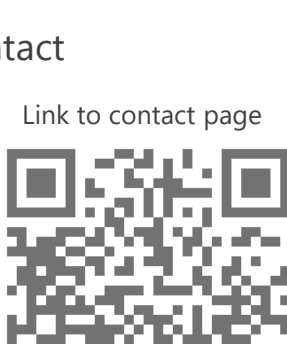
Andrés Iñiguez et al, Comparison of long-term clinical outcomes in multivessel coronary artery disease patients treated either with bioresorbable polymer sirolimus-eluting stent or permanent polymer everolimus-eluting stent: 5-year results of the CENTURY II randomized clinical trial, Catheter Cardiovasc Interv. 2020 Feb;95(2):175-184.



[Publication >](#)

### Contact

Link to contact page



Detailed specification

Clinical evidence

Support

